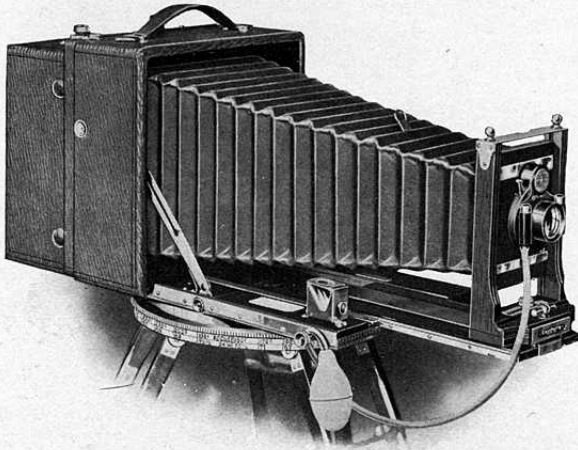


The Cirkut Panoramic Outfit



Photo by METZGER, San Francisco

Up to the time that Cirkut Apparatus was introduced the extensive field of Panoramic Photography was practically closed, except to those who wished to engage in this interesting work in the most superficial way, or undertake the laborious process of making a series of negatives and matching them end to end. Cirkut Apparatus has eliminated all the obstacles in the way of true Panoramic Photography, and opened up an entirely new field of delightfully interesting photographic work.



Panoramic photography—true panoramic photography—has been so long in presenting itself, on account of the many and great apparent difficulties in constructing apparatus that would do the work properly. An instrument that will expose a sensitized surface many feet in length, avoiding the violent distortion invariably in evidence in the ordinary type of panoramic camera, is truly a Panoramic Camera, and the only

one justly entitled to that distinction. That is the Cirkut. Its plan of construction does not contemplate the use of the short focus lens. It offers great latitude in the focal length of lenses. With the Cirkut, distortion is practically eliminated and the long-looked-for real Panoramic Camera is an accomplished fact.

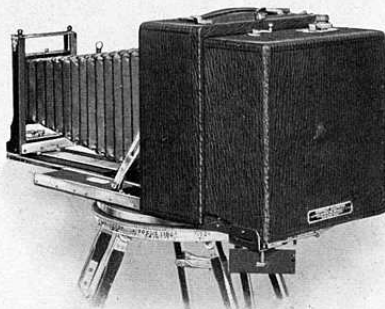
**The Cirkut
Outfit**

The wonderful success of the original No. 10 and No. 16 Cirkut Cameras has led to the introduction of the smaller No. 6 and No. 8 Outfits, the former adapted for film $6\frac{1}{2}$ inches wide, the latter for 8-inch widths.

The Cirkut Panoramic Outfit is in itself a most complete affair, being made up of a camera which can be used in the ordinary manner for plates if desired, and a Panoramic Attachment which is easily and quickly attached to the camera, thus converting it into a Panoramic Outfit. The attachment in itself is much like an ordinary Cartridge Roll Holder, in that it is made to use Eastman Daylight-loading Cartridge Film. In addition it contains the mechanism which, when the outfit is in operation, unwinds the film past a slot on a roller and in so doing exposes it and at the same time revolves the camera about on an axis—a special tripod and top being furnished.

A pressure on the release is all that is necessary to start the motor—another pressure stops it; thus negatives of any desired length up to 6 feet with the No. 6, and 8 feet with the No. 8 may be made. A complete circle of 360° may thus be photographed if desired.

There is an indicator on the top of the film holder showing the exact quantity of film exposed and that remaining unexposed. By another very ingenious arrangement one is enabled to determine, before exposure is made, how long a photograph the view decided on will be.



Attachment Fitted to a 5 x 7 Camera

CENTURY

Eastman Daylight-loading Film only is supplied for all Cirkut Apparatus.

In addition to the Panoramic Outfit, either Cirkut No. 6 or No. 8 provides an equipment which permits of its use as a regular hand camera for plates when so desired, and while the camera is adapted for panoramic work, by removing the film attachment, a revolving ground glass back is provided, which may be easily fitted, thus converting the outfit into a Revolving Back Plate Camera. With the No. 6 the camera is a 5 x 7; the No. 8 is $6\frac{1}{2} \times 8\frac{1}{2}$.

The camera has a double-section brass-bound telescopic bed, swing back and bed, rack and pinion movements, extra bellows length, and is in every way up to the Century Standard.

The lens regularly supplied is the Centar Series II, with Century No. 1 Automatic Shutter.

A double plate holder, a Crown Tripod (the best tripod made) complete the outfit. There is nothing in the entire field of photographic apparatus which for completeness is in any way comparable with the Cirkut Panoramic Outfit. A carrying case which will hold the complete outfit is furnished. Cirkut Outfits will be sold complete only.

SPECIFICATIONS

	No. 6	No. 8
Width of Photograph	$6\frac{1}{2}"$	8"
Dimensions of Camera	$8\frac{7}{8} \times 4\frac{1}{8} \times 8\frac{1}{2}$	$10\frac{5}{8} \times 4\frac{3}{4} \times 10\frac{1}{2}$
Weight of Camera	$5\frac{3}{8}$ lbs.	$8\frac{1}{2}$ lbs.
Dimensions of Camera with Attachment	$8\frac{7}{8} \times 8 \times 8\frac{1}{2}$	$10\frac{5}{8} \times 8\frac{1}{4} \times 10\frac{1}{2}$
Weight " " " "	9 lbs.	14 lbs.
Length of Bellows	17"	21"

PRICE

Cirkut Panoramic Outfit, including Century Camera, Series II Centar Lens, No. 1 Automatic Shutter and Panoramic Attachment; also removable, Revolving Back and Double Plate Holder for Camera, Tripod and Carrying Case to hold			
	No. 6		No. 8
complete equipment	\$112.50		\$175.00
With B. & L.-Zeiss Protar VIIa Lens	No. 9	196.00	No. 12 283.00
$6\frac{1}{2}" \times 3'$ Film, Roll80	
$6\frac{1}{2}" \times 6'$ " "		1.60	
8" x 4' " "			1.30
8" x 8' " "			2.60